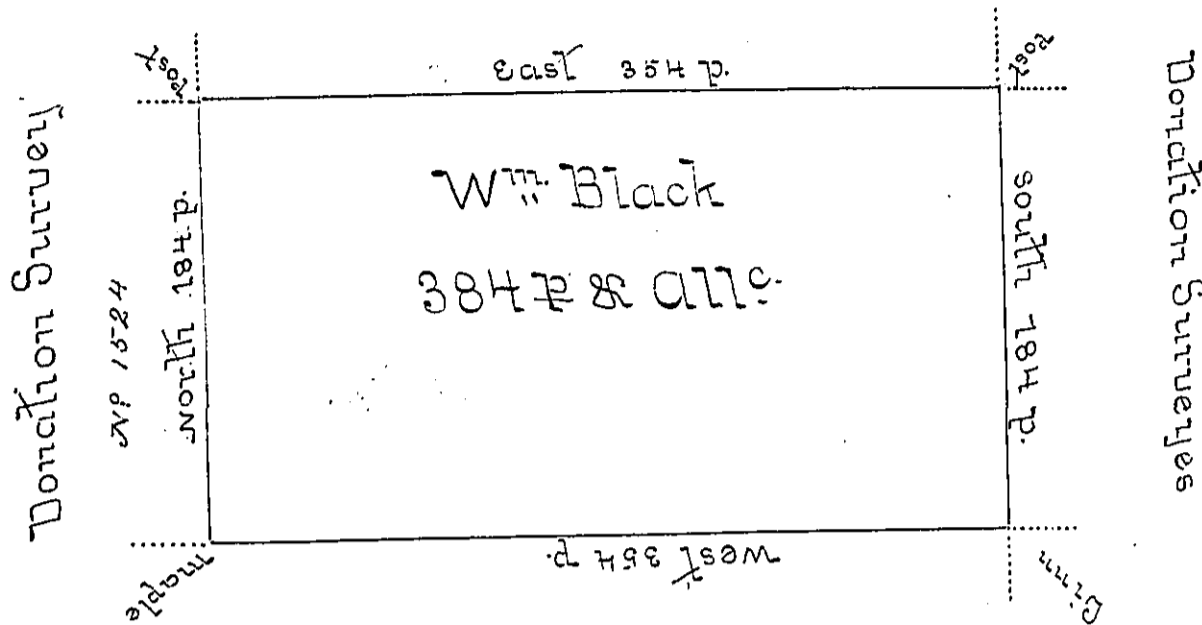


Elisha Harris



Holland Comp.

Situate on the west side of French Creek in Allegheny County containing 384 Acres and allowance of Six Percent for Roads & Surveyed the 17th Day of June 1795 in pursuance of his Improvement Dated the 17th April 1795.

To Dan: Brodhead Esq:
Surveyor General

Wm Power D.S.

IN TESTIMONY that the above is a copy of the original remaining on file in the Department of Internal Affairs of Pennsylvania, made conformably to an Act of Assembly approved the 16th day of February, 1833, I have hereunto set my Hand and caused the Seal of said Department to be affixed at Harrisburg, this

first day of December 1896

James W. Patton
Secretary of Internal Affairs.